

Female coupling made of 43mm EPP

# EPP-43-MSF



## Description

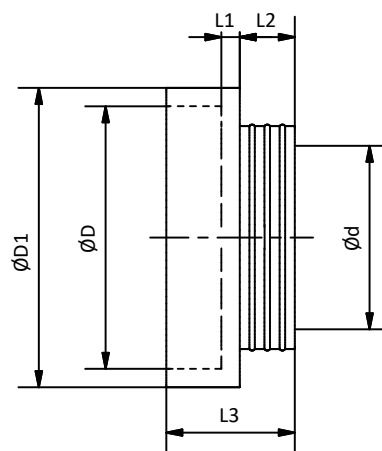
Female coupling made of expanded polypropylene (EPP) for connecting 43mm thick ducts. The coupling is used as additional piece, for example when connecting ducts which were cut. Such coupling is put on the outer diameter of a duct. The female couplings are produced in the following diameters: 125, 160 or 200 mm.

Thermal conductivity: 0.039 W / m\*K  
 Airtightness class: ATC2 (old D) @ 110 Pa  
 acc. to PN-EN 17192:2019-01

**Available materials:**  
 EPP-43-MSF-....- EPP (expanded polypropylene)

**Example of marking:**  
 Product code: **EPP-43-MSF - 200**  
 type \_\_\_\_\_  
 diameter Ød \_\_\_\_\_

## Dimensions



Kod	Ød [mm]	ØD [mm]	L <sub>1</sub> [mm]	L <sub>2</sub> [mm]	L <sub>3</sub> [mm]	ØD <sub>1</sub> [mm]
EPP-43-MSF-125	125	211	20	60	140	251
EPP-43-MSF-160	160	246	20	60	140	286
EPP-43-MSF-200	200	286	20	60	140	226

## Assembly method

