

Female coupling made of EPP

EPP-15-MSF



Description

A female-male coupling made of expanded polypropylene (EPP) is used to connect the EPP-15 ducts, when the male part is cut off (e.g. when duct is shortened). The female coupling fits the outer diameter of the 15mm duct. The couplings are produced in 125, 160 and 200mm sizes.

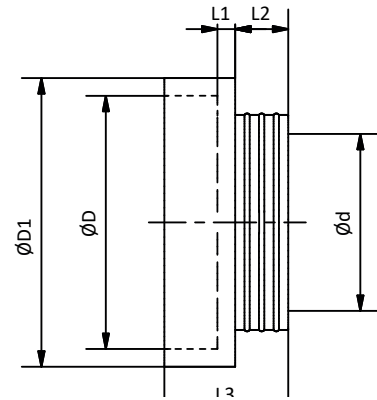
Thermal conductivity: 0.039 W / m*K
 Airtightness class: ATC2 (old D) @ 90 Pa
 acc. to PN-EN 17192:2019-01

Available materials:
 EPP-15-MSF-....- EPP (expanded polypropylene)

Example of marking:
 Product code: **EPP-15-MSF - aaa**

type _____
 diameter Ød _____

Dimensions



Kod	Ød [mm]	ØD [mm]	L ₁ [mm]	L ₂ [mm]	L ₃ [mm]	ØD ₁ [mm]
EPP-15-MSF-125	125	155	10	50	110	179
EPP-15-MSF-160	160	190	10	50	110	214
EPP-15-MSF-200	200	230	10	50	110	254

Technical data

Technical data according to PN-EN 17192 15mm

Air tightness	ATC2 (D) ≤ 90 Pa ATC3 (C) ≤ 1000 Pa
Service temperature	-25°C do +80°C PN-EN 17192:2019
Reaction to fire	D-s3,d2 (DN 125) E (DN 160,200) 190
Resistance	Brak deformacji przy ugięciu 3% i nacisku 35kN 230
Thermal conductivity	λ = 0,0038 W/(m·k) PN-EN 12664:2002
Thermal resistance	U = 0,3947 m2K/W PN-EN 12664:2002
Microbial resistance	1a Metoda A PN-EN ISO 846:2019

Assembly method

